

GUARD SCAN GS2000+

IP66 Robust Metal Guard Tour Terminal

The Mobile Guard Tour Monitoring System



The GS2000+ Hand held terminal in conjunction with the software is a mobile solution that enables you to electronically record your mobile staff's movements.

The GS2000+ verifies that the guard checked all posts assigned to him. The terminal is vandal proof, easy to operate and carry.

One-touch operation

Each guard point is equipped with a passive proximity tag, and the guard is supplied with a hand held terminal. When the guard does his rounds the tag is scanned at each guard point. The terminal reads the ID of the tag and records the time & date the tag is scanned. This verifies the guard has checked each and every post on time.

The GuardScan GS2000+ helps you to keep track of mobile employees whose working duties require moving from one place to another such as: patrol guards, night nurses, or remote equipment inspectors.

The GS2000+ is IP66 rated; totally protected against dust, totally protected against strong jets of water. The metal housing is the best solution for water-resistant requirements and is shock-proof. The mobile-phone type carrying case makes it easy to carry and protects the scanner.

Downloading information

At the end of the shift / day / week etc. the information stored in the mobile terminal is downloaded into a PC.

Reports

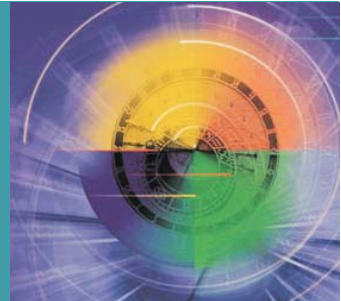
The transactions can be processed and printed, showing a list of movements per guard, per ID station and per date & time. This data can also be exported into Excel and other applications.



GUARD SCAN GS2000+

IP66 Robust Metal Guard Tour Terminal

The Mobile Guard Tour Monitoring System



Technical Specifications

- Up to 14,320 reading scans on a single battery full charged, and up to 4 weeks in stand-by Mode.
- Up to 100,000 reading scans on one heavy-duty C size Alkaline battery
- Simple one button operation for scan, contactless reading.
- LED and buzzer to show operation status.
- Infra red data transfer from GS2000+ handset to base station
- Minimum PC specifications: Pentium 266, Windows 95 or higher, 256 MB RAM, 50 MB free hard disk space, free serial port.

GS2000+ Handset

Interface: Infra red

Power Requirement: Size C / UM-2 Single-Cell Alkaline battery*1

Reading Range: ~ 4cm

Memory: 512K, 14320 records

Indicator: LED/Beeper

Frequency and Format: 125KHz, ASK, 64 bits, Manchester encoding

Operating temperature range: -10 ~ +50 degree C

Dimensions: Diameter 52 x 168 mm

Material: Metal housing / Polycarbonate reading head

Weight: 0.31 kg



GS2000+ Base Station

Interface: USB or RS232 - Please specify in the order

Power Requirement: USB:5V DC/200mA, RS232: 5VDC

Indicator: LED

Operating temperature range: -10 ~ +50 degree C

Dimensions: Diameter 120 x 52 mm

Material: Polycarbonate

Weight: 0.32kg



End User Price List

GS2000 hand held terminal, carry case and charger: £450.00

GS2000 Software: £180.00

Station ID Tag: £4.00 per tag

Special offers are available for large quantities of terminals.



Synel Industries (UK) Ltd.

19 Heather Park Drive, Wembley, Middlesex HA0 1SS

Tel: 020 8900 9991 Fax: 020 8902 3595

Website: www.synel.co.uk, E.mail: sales@synel.co.uk