

Synergy Access

Access Control Solution



Scalable management of all access points across your organisation

At a glance

- Hosted (SaaS) and On-Premise management options with web-based GUI
- Fully featured
- Easy to expand over time
- Compatible with a host of reader and biometric hardware from leading vendors
- Automatic Number Plate Recognition (ANPR) options
- Full end-to-end service from Synel encompassing design, installation, commissioning, and on-going support

Synergy Access is available as an add-on module to Synel's **Synergy Workforce** time and attendance platform, or as a completely standalone solution. Compatible with a host of biometric and card technologies, the platform is easy to scale and suitable for applications of any size across any number of sites regardless of location.



Fully hosted SaaS and On-Premise options

Whether you are looking to take advantage of all the benefits offered by hosting in the cloud - such as not having to worry about managing servers, simplicity to scale, automatically keeping your solution up to date, and enjoying the highest levels of data security - or the more traditional approach of an on-premise server, **Synergy Access** provides options for both infrastructures.

Administration takes place via an intuitive web-browser GUI making it easy for those authorised to access the system for reporting and to enrol users via their own computer from anywhere in the world.



The features that you need

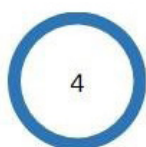
Synergy Access is fully featured as standard, meaning that you get all the functionality that you need from day one. It is easy to enrol users and the platform is compatible with a host of biometric and card technologies to perfectly match your requirements.



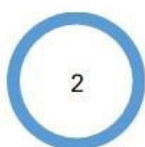
Unlimited Security Groups and Time Zones



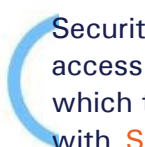
Devices



Doors Readers



Security



Time

Security Groups allow administrators to control users access to specific doors, on which days and between which times. Unlimited security groups can be created with **Synergy Access** and users can be members of multiple groups.

Anti-Pass back and high-security architecture

Anti-pass back is provided to ensure that the same credentials cannot be used to enter a door twice, which prevents users passing their card to another person after they gain access. Time controls can be placed on users to facilitate temporary access or control the time that access is granted from and to. For added security, **Synergy Access** is compatible with secure-side relays which cut the power to the lock in the event of tampering to ensure doors stay firmly locked.

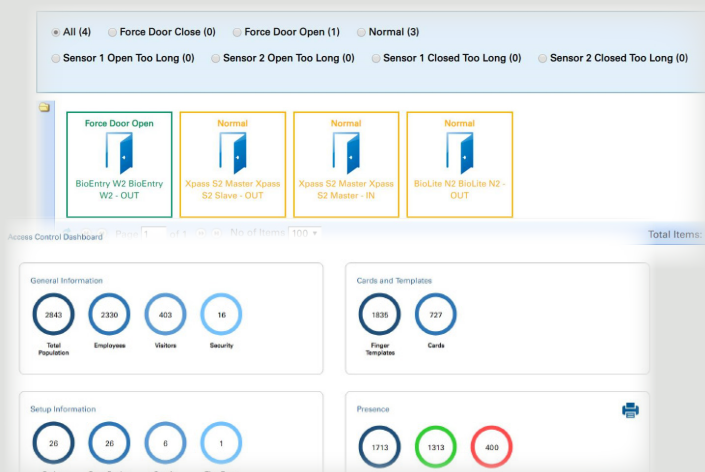


Muster & Evacuation

Doors, turnstiles & gates, controlled by **Synergy Access**, can automatically open when the Fire Alarm is triggered. Muster Points are supported and in the event of a fire alarm or evacuation, muster/evacuation reporting is provided with a fire report for rapid analysis following an incident and, if connected to the fire panel, this can be automatically e-mailed to appropriate managers or printed at any printer(s) on the network.

Real-time dashboard with stateful alarms

Administrators can see at a glance a host of information on users, such as who is in or out of the building as well as the current state of doors, such as 'door closed' or 'door held open'. Stateful alarms can be sent to alert managers by e-mail for specific conditions, such as alerting when a door is held or forced open.



Unlimited doors, sites and time zones

Whether you have a few doors in one location, or many thousands over multiple sites, the way in which **Synergy Access** scales makes it cost-effective for any size solution. With Synel's hosted cloud architecture (SaaS) it's even simpler to join sites together on the same solution and scale up or down, as required.



Added functionality with Synergy App

Synergy Access has companion features that can be used with **Synergy App** (separate subscription required) which delivers extra functionality via your iOS or Android device. For example, it gives access to the Events Screen to show who has swiped in and out in real time and also the Muster Screen, which quickly identifies people who have swiped in but have not swiped at the Muster Point and may still be in the building, again in real time, which helps manage evacuations effectively without the need to print out reports.



Automatic Number Plate Recognition

Synergy Access is also available with an Automatic Number Plate Recognition (ANPR) module that allows number plates to be read to control bollards and barriers for accessing sites.

Integration with Video Management Software (VMS)

Synergy Access can integrate with third-party VMS software adding the power of video to your access control solution. This gives full video audit of access control transactions, the ability to search for video of specific entry/exit events or stateful alarm events, and pro-active user-defined pop-up alerts should a specific criterion be met.



Compatible with a host of hardware technologies

Facial Recognition touch-free Biometric readers

Demand for contact-free access control solutions is rising rapidly with employers looking at options that are completely touchless to complement their workplace safety policies following on from the Coronavirus pandemic. Synel's **Synergy Access** platform is compatible with a wide range of biometric and card technology hardware to deliver a truly touchless experience for users.

Synel provides the full range of networked facial recognition biometric readers from Suprema to perfectly match the needs of your application. Users only need to enrol at one reader on the system and all other readers are then updated over the network. When a user presents themselves to the reader, it will check the credentials of that individual and, if authorised, will unlock the door. The user will not be required to press any buttons or present a card.

For privacy and security reasons, no actual images of faces are stored on any of the devices. Instead encrypted hash values of points across the face are stored and that is what is matched against the person presenting themselves to the reader. The readers are highly accurate and operate effectively in the brightest of conditions down to pitch-black darkness.

Suprema facial recognition readers also include a host of card technologies making dual-authentication possible where as well as a user having their face scanned, a card must also be presented for enhanced security.



Contactless card readers

Synel offers a host of readers compatible with a host of card technologies including Proximity, Mifare, HID and HID iClass in both card and key fob styles. Intelligent readers with built-in controllers and the more traditional controllers with multiple reader configurations are supported.

Synel also provides everything that you need to produce cards such as blank cards/fobs, card printers and accessories like lanyards and card holders. A service is also available to individually number cards and fobs.



Contactless exit buttons and auto-door opening

Available as either surface mount or flush mount, contactless exit buttons unlock doors for exiting at the wave of your hand. When used with automatic door opening its possible to create 100% touch--free solutions.

Fingerprint Biometric readers

Synel provides the full range of fingerprint readers from Suprema. As with facial recognition, users only need to enrol at one reader on the system and all other readers are then updated over the network.

Door handles

Synergy Access is compatible with Salto's Sallis range of door handles.

Lift controllers

Synergy Access is compatible with Suprema lift controllers

Turnstiles

Synel works with a number of turnstile partners to ensure the perfect solution for your organisation.



Part of Synel's comprehensive Workforce Management suite

Synergy Access forms part of Synel's suite of workforce management solutions and can be purchased as an add-on module to users of Synergy Workforce, Synel's leading Time & Attendance (T&A) solution, or as a completely standalone platform.

With Synel's workforce management solutions its possible to add modules together at any time and benefit from ease of administration from a common web-based GUI as well as added features that are delivered. Your perfect workforce management solution can be created by using the following software, supported by a range of compatible hardware devices:

Synergy Workforce - fully featured Time and Attendance platform

- Time Costing Module
- Field Management Module, including Time Costing
- Integration with all leading payroll systems, MIS systems and Print Management systems
- Host of biometric and card/fob technology supported
- Student registration Module
- EPoS Module

Synergy Access - cost-effective and scalable access control

- Host of biometric and card/fob technology supported

Synergy Visitor - visitor management solution

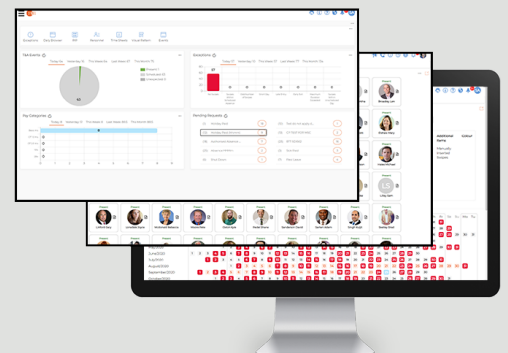
- Temperature Kiosk

Synergy Expenses - quick and easy expenses management

Synergy App - mobile capability across Synel's workforce management suite

Synergy Connect - easily connects Synel biometric clocking devices to third-party applications

Synel is an end-to-end supplier of workforce management solutions offering design, installation, commissioning, and on-going support to deliver complete peace of mind to its customers.



Technical Specifications:

Features	Synergy Access
General	
Number of doors supported	Unlimited
Number of users	Unlimited
Number of security groups	Unlimited
Maximum security groups a user can be a member of	5
Muster support	Yes
Reporting	Real-time dashboard and flexible generated reports. Automatic fire report when linked to fire panel
Administration	
Browser-based GUI	Yes
Architecture	
Hosted (SaaS)	Option
On-Premise (server)	Option
Hardware Compatibility	
Facial Recognition	Yes (Suprema devices)
Fingerprint	Yes (Suprema devices)
Multidoor controllers	Yes (Synel & Suprema devices)
Readers	Yes, Proximity, Mifare, HID, HID iCLASS, magstripe - reader/controller and readers when used with a compatible controller
Lift controllers	Yes, Suprema
Door handles	Yes, Salto Sallis range
BLE	Future release
Synergy App	
Compatible with Synergy App	Yes, subscription required
Mobile Muster	Yes
BLE	Future release

Ordering information:

ACM-S-A	Synergy Access module for hosted SaaS version of Synergy Workforce, up to 10 doors
ACM-S-A-X	Adds an additional 5 doors to ACM-S-A (multiples of 5)
NETFL-S-A	Fire link module for ACM-S-A
ACM-L-A	Synergy Access module for on-premise version of Synergy Workforce, up to 10 doors
ACM-L-A-X	Adds an additional 5 doors to ACM-L-A (multiples of 5)
NETFL-L-A	Fire link module for ACM-L-A
ACM-S-S	Synergy Access standalone hosted SaaS access control solution
ACM-S-S-X	Adds an additional 5 doors to ACM-S-S (multiples of 5)
NETFL-S-S	Fire link module for ACM-S-S
ACM-L-S	Synergy Access standalone on-premise access control solution
ACM-L-S-X	Adds an additional 5 doors to ACM-L-S (multiples of 5)
NETFL-L-S	Fire link module for ACM-L-S
ANFL01	Network relay to automatically unlock doors on activation of fire alarm. One required per fire panel